

L5

UNIQUE LED LIGHTS WITH TRUE FRESNEL PERFORMANCE

Portable. Durable. Tuneable.

The ARRI L-Series is a wide-ranging family of LED Fresnels that provides today's gaffers and lighting designers with the versatility and quality they require in modern lighting fixtures. The L-Series Fresnels are so close to their conventional tungsten counterparts in function and performance that they create a previously unattainable opportunity: like-for-like replacement of traditional Fresnels with LED-based units. L-Series fixtures were the first LED lights to truly incorporate Fresnel characteristics such as continuous focusability from spot to flood and a smooth, homogenous light field. The fact that L-Series lampheads can be operated in the same way and in the same situations as traditional Fresnels means a zero learning curve for lighting professionals and minimal inconvenience for studios making the switch to LED.



Encompassing multiple power classes, the L-Series offers solutions for almost any application, from large television studios to small interview setups and everything in-between. The L7 is a mid-range model, featuring a 7 inch Fresnel lens and accommodating the vast majority of applications. The L10 is the brightest and largest L-Series lamphead to date. Its substantial 10 inch Fresnel lens and powerful output allows for more distant fixture placement and the wrapping of light around objects in a natural and pleasing way. The L5 is the perfect companion for more mobile lighting and ideal for cramped location shoots and interview setups. Its compact size and low weight allows the L5 to be rigged in tight places and hung from low ceilings.

The L5, L7 and L10 take full advantage of LED technology by allowing complete control over light intensity and color. At the heart of the L-Series are a few core concepts: tuneability, color fidelity, high build quality and ease of use. Three simple knobs permit the brightness, color temperature from 2.800 K to 10.000 K and green/magenta point to be fine-tuned, while a focus knob on the side of each fixture allows for smooth adjustment of the beam spread, just like conventional sources.

Made in Germany to the high standards for which all ARRI products are known, L-Series is built to last – constructed from resilient materials and assembled by hand with great care. Features include a Mini-USB port for firmware updates and powerCON TRUE 1 power connection.

The ARRI Lighting Service Manager (ALSM) is an essential tool for updating, maintaining and servicing your ARRI LED light fixture. With the ALSM you can update firmware, download service logs from the fixture, change DMX and fan mode settings and much more.

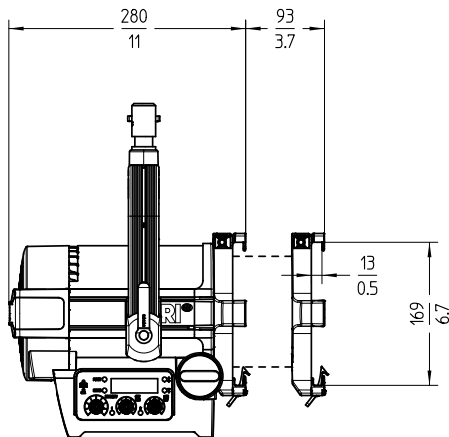
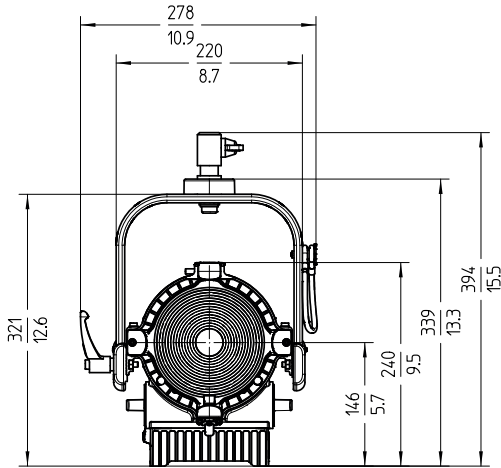
Order No.	Description
L0.0001958	L5-C, Hanging, Blue/Silver (Bare Ends)
L0.0001954	L5-C, Hanging, Black (Bare Ends)
L0.0001953	L5-C, Pole Operated, Blue/Silver (Bare Ends)
L0.0001952	L5-C, Pole Operated, Black (Bare Ends)
L0.0001955	L5-C, Stand-Mount, Blue/Silver (Schuko)
L0.0001956	L5-C, Stand-Mount, Blue/Silver (Edison)

Further Versions available.

ALL VERSIONS INCLUDE	powerCON TRUE1 mains cable, Onboard control panel, 5-pin DMX in and thru connector, 4-pin battery connector (22 - 36 V DC), 16 mm / 28 mm Combo Pin (Baby 5/8" / Junior 1 1/8" Combo Pin)
HANGING	1.5 m (5 ft) cable with Bare Ends
POLE-OPERATED	1.5 m (5 ft) cable with Bare Ends, Pole Operation for pan, tilt and focus
STAND-MOUNT	3 m (10 ft) Mains Cable with Schuko connector with line switch or 7 m (23 ft) Mains Cable with Edison connector with line switch
NOT INCLUDED	Barndoors (have to be ordered separately)

L5 SERIES
CUT. SHAPE. FOCUS. TUNE.

Technical Specifications



Lamphead	
Optical System	Focusable Fresnel
Light Aperture	137 mm / 5"
Beam Angle	14° to 50° (Half Peak Angle)
Weight	Manual Version: approx. 5 kg / 11.2 lbs Pole Op Version: approx. 7 kg / 15.4 lbs
Handling	Adjustable Sliding Stirrup, High Strength Tilt Lock, Pole Operation Option (Pan, Tilt and Focus)
Mounting	16 mm / 28 mm Combo Pin (Baby 5/8" / Junior 1-1/8" Combo Pin)
Tilt Angle	+/- 90°
Power Supply Range	90 - 250 V~, 50 - 60 Hz
Power Consumption	100 W Nominal, 115 W Maximum
Lamphead Power Connection	powerCON TRUE1 (Bare Ends / Schuko / Edison cables available)
Battery Connector	4-Pin XLR Connector (Pin 1: Negative / Pin 4: Positive)
Battery DC Voltage Range	23 to 36 V DC
White Light	2,800 K to 10,000 K continuously variable correlated color temperature
Colored Light	Full RGB+W color gamut with Hue and Saturation control
Color Temperature Tolerance	+/- 100 K (nominal), +/- 1/8 Green-Magenta (nominal)
Color Rendition	CRI Average > 94 TLCI Average > 90
Green-Magenta Adjustment	continuously adjustable (Full Minusgreen to Full Plusgreen)
Dimming	0 to 100 % continuous
Control	5-Pin DMX In and Through, On-Board Controller, Mini-USB
Remote Device Management (RDM)	DMX Setup, Hour Counter and Standard RDM commands
Mini-USB Interface	DMX Setup, Fixture Status and Firmware Upgrade Through PC Software
Housing Color	Blue/Silver, Black
Ambient Temperature Operation	-20 to +45° C (-4 to +113° F)
Protection Class / IP Rating	I / IP20
Estimated LED Lifetime (L70)	50,000 hours
Estimated Color Shift Over Lifetime (CCT)	+/- 5 %
Certifications	CE, CB, GS, cNRTLus, FCC, PSE

All specifications are nominal / typical values.

Photometric Data

	3 m / 9.8 ft		5 m / 16.4 ft		7 m / 23.0 ft		9 m / 29.5 ft	
L5-C	3,200 K	5,600 K	3,200 K	5,600 K	3,200 K	5,600 K	3,200 K	5,600 K
Spot: 15°	3111 lx 289 fc	3278 lx 305 fc	1120 lx 104 fc	1180 lx 110 fc	571 lx 53 fc	602 lx 56 fc	346 lx 32 fc	364 lx 34 fc
Middle: 30°	967 lx 90 fc	1022 lx 95 fc	348 lx 32 fc	368 lx 34 fc	178 lx 16 fc	188 lx 17 fc	107 lx 10 fc	114 lx 11 fc
Flood: 50°	380 lx 35 fc	399 lx 37 fc	137 lx 13 fc	144 lx 13 fc	70 lx 6 fc	73 lx 7 fc	42 lx 4 fc	44 lx 4 fc

nominal results

L SERIES
 CUT. SHAPE. FOCUS. TUNE.