

Carl Zeiss AG
Camera Lens Division
73446 Oberkochen
Germany

Phone: +49 7364 20-6175
Fax: +49 7364 20-4045
Email: photo@zeiss.de
www.zeiss.com/photo

EN_10_025_148III Printed in Germany
Subject to change in design and scope of delivery and as a result of ongoing technical development.



SLR lenses
Perfection from Carl Zeiss.



We make it visible.

The moment you manage to capture something unique.
This is the moment we work for.



**Perfection. For every moment.
For every picture.**

When the right combination of lighting, focus and subject comes together, this is what great photography is all about.

Our SLR lenses offer the perfect equipment to obtain the best results from these moments. All in legendary ZEISS quality.



GENERAL PRODUCT FEATURES

Carl Zeiss SLR lenses feature exceptionally high-quality workmanship and legendary ZEISS quality. They offer precise manual focus and support all other automatic functions found in standard cameras.

Outstanding image quality

- Excellent reflection reduction thanks to Carl Zeiss T* anti-reflective coating
- Advanced stray light reduction
- Almost circular aperture with 9 blades enables an exceptionally harmonious bokeh
- Uniform standardized color characteristics throughout all ZF.2 and ZE focal lengths
- Optimal distortion correction in all focal lengths

High Precision

- Extremely accurate manual focusing for high-precision photography
- 1/2 f-stop intervals with easy-to-feel lock-in positions and exact photometric graduation in ZF.2 lenses. ZE lenses controlled electronically through the camera

High-quality workmanship

- Robust, all-metal design for many years of use
- Durable front ring with filter thread and outer bayonet for lens shade

ZEISS SLR lenses come standard with a matching lens shade.

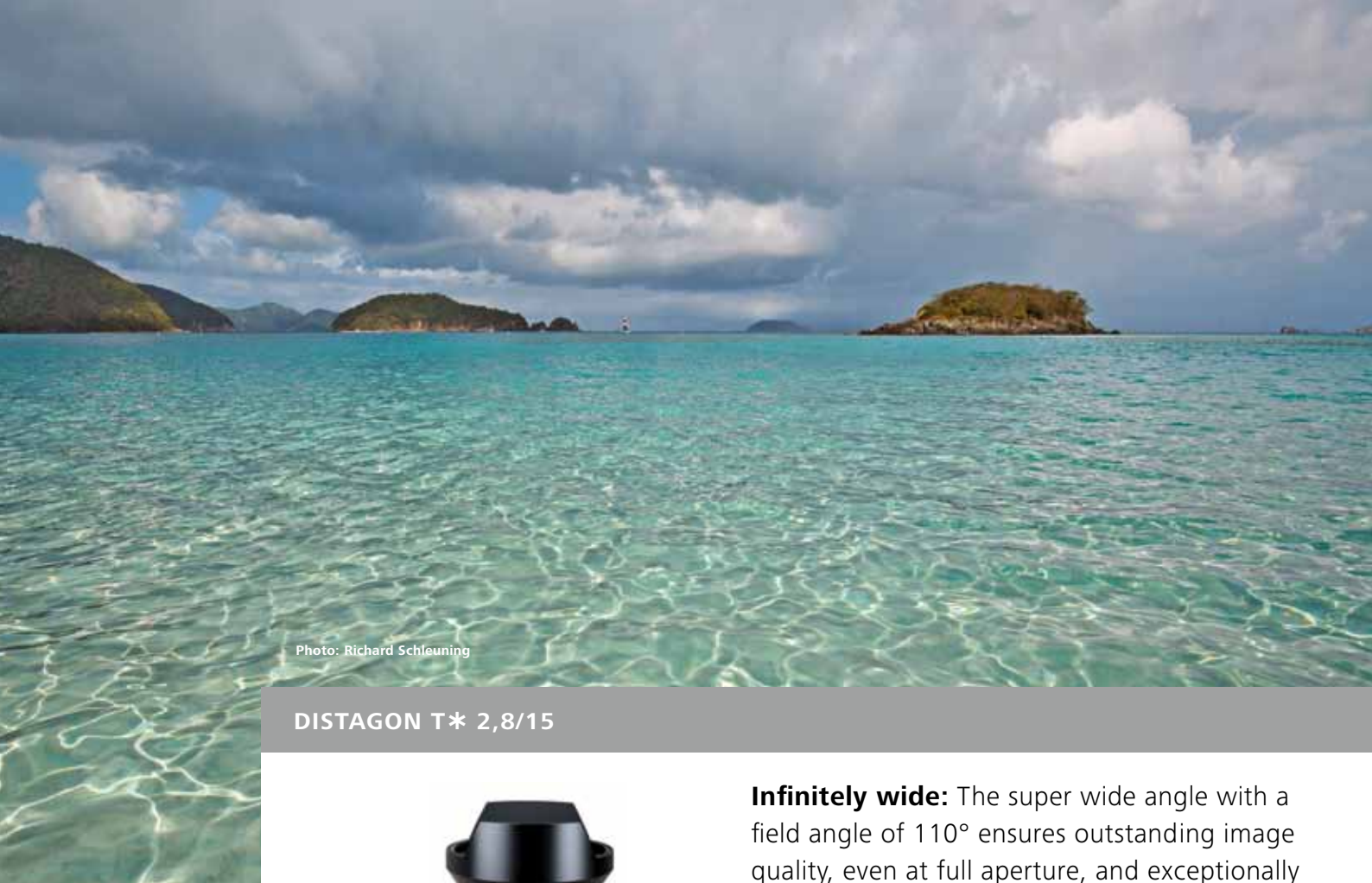


Photo: Richard Schleuning

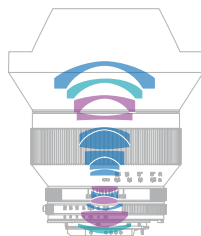
DISTAGON T* 2,8/15



Infinitely wide: The super wide angle with a field angle of 110° ensures outstanding image quality, even at full aperture, and exceptionally low distortion. An optional 95 mm filter provides the front lens with optimal protection.

Design

- Distagon with 15 lens elements in 12 groups
- Lens with aspheric surface
- Lens made of special glass with anomalous partial dispersion
- “Floating Elements” design



Technical data

Focal length	15 mm
Aperture range	f/2.8–f/22
Elements/groups	15/12
Focusing range m/ft	0.25–∞/0.82–∞
Field angle* (diag./horiz./vert.)	110/100/76°
Coverage** (cm/inch)	34 x 22.1/13.4 x 8.7

*Based on 35 mm format. **At close range.



Photo: Jan Wöllert/Jörg Miedza

DISTAGON T* 3,5/18



New viewing angles: The compact super wide angle lens is ideal for landscape and architecture photography and enables creative photography with unusual perspectives. It has impressive image quality across the entire image field.

Design

- Distagon with 13 lens elements in 11 groups
- Lens made of special glass with anomalous partial dispersion
- “Floating Elements” design



Technical data

Focal length	18 mm
Aperture range	f/3.5–f/22
Elements/groups	13/11
Focusing range m/ft	0.3–∞/0.98–∞
Field angle* (diag./horiz./vert.)	99/90/67°
Coverage** (cm/inch)	44 x 29/17.3 x 11.4

*Based on 35 mm format. **At close range.



Photo: Eva Maierhofer

DISTAGON T* 2,8/21



Boundless horizons: The legendary super wide angle design, now available for today's cameras. Thanks to optimal correction of all chromatic aberrations and outstanding stray light reduction, this super wide angle lens is ideal for taking photographs in challenging lighting conditions.

Design

- Distagon with 16 lens elements in 13 groups
- Lens made of special glass with anomalous partial dispersion
- "Floating Elements" design



Technical data

Focal length	21 mm
Aperture range	f/2.8–f/22
Elements/groups	16/13
Focusing range m/ft	0.22–∞/0.72–∞
Field angle* (diag./horiz./vert.)	90/81/59°
Coverage** (cm/inch)	18 x 12/7.1 x 4.7

*Based on 35 mm format. **At close range.



Photo: Bertram Hönlinger

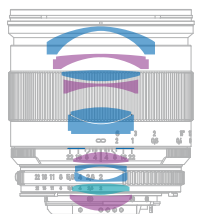
DISTAGON T* 2/25



High-speed perspectives: The wide angle of view together with a fast aperture allows for fascinating perspectives and creative possibilities. The lens is ideal for landscape, architecture or journalistic pictures and produces images with sharp contrast edges and unrivaled detail, even without a tripod.

Design

- Distagon with 11 lens elements in 10 groups
- Lens with aspheric optical surface
- Lens made of special glass with anomalous partial dispersion
- “Floating Elements” design



Technical data

Focal length	25 mm
Aperture range	f/2–f/22
Elements/groups	11/10
Focusing range m/ft	0.25–∞/0.82–∞
Field angle* (diag./horiz./vert.)	81°/71°/51°
Coverage** (cm/inch)	21.9 x 14.4/8.6 x 5.7

*Based on 35 mm format. **At close range.



Photo: Michael Wartmann

DISTAGON T* 2,8/25



Near and far: The exceptionally wide angle lens with a short close-focusing distance offers completely new perspectives which are simply not possible with standard macro lenses. It is almost completely free from reflection and stray light, with an especially harmonious bokeh. Available in ZF.2 version only.

Design

- Distagon with 10 lens elements in 8 groups



Technical data

Focal length	25 mm
Aperture range	f/2.8–f/22
Elements/groups	10/8
Focusing range m/ft	0.17–∞/0.56–∞
Field angle* (diag./horiz./vert.)	80/70/50°
Coverage** (cm/inch)	8.3 x 5.5/3.3 x 2.2

*Based on 35 mm format. **At close range.

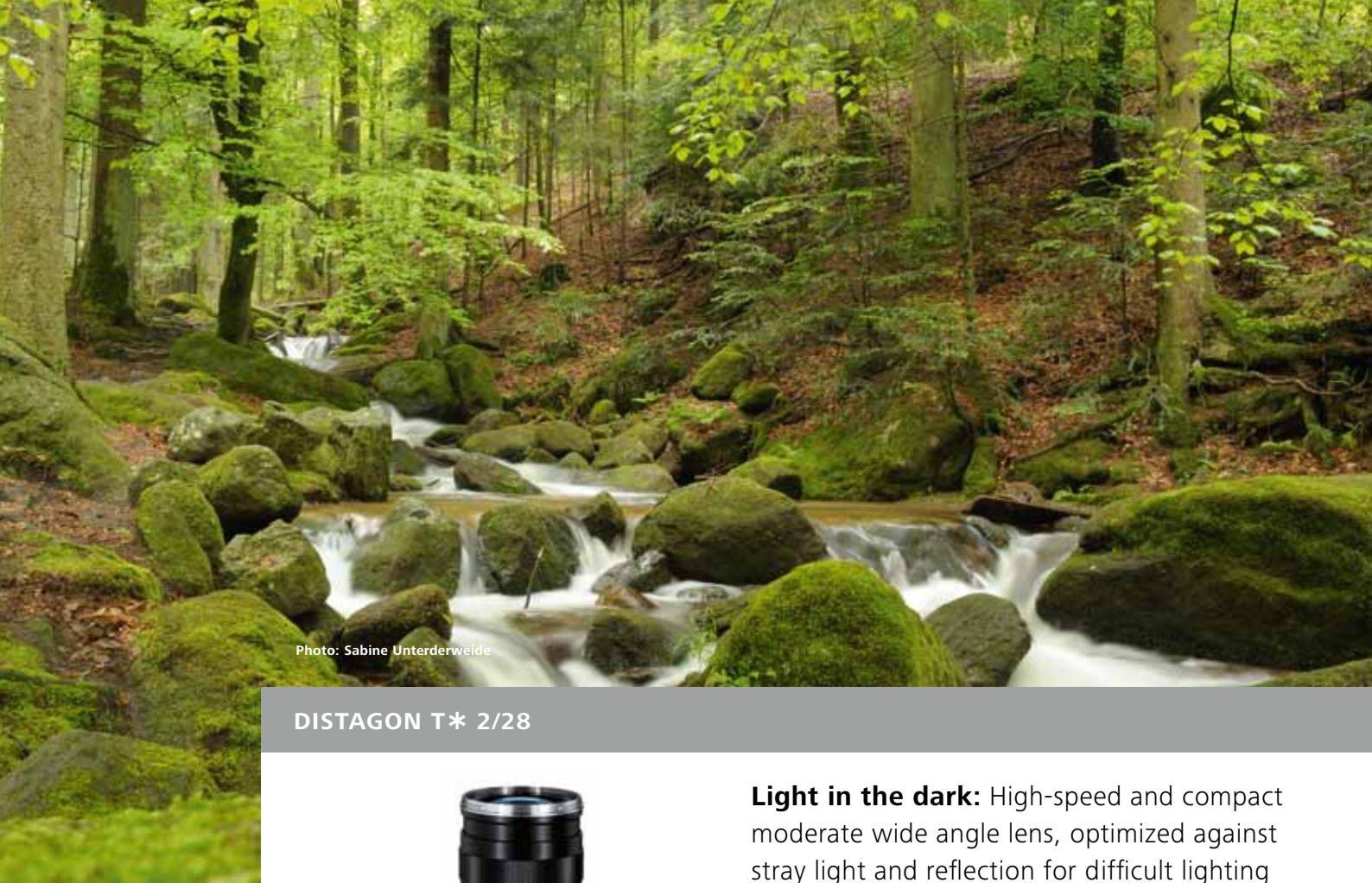


Photo: Sabine Unterderweide

DISTAGON T* 2/28



Light in the dark: High-speed and compact moderate wide angle lens, optimized against stray light and reflection for difficult lighting conditions. The combination of focal length and lens speed makes it suitable for a broad spectrum of applications.

Design

- Distagon with 10 lens elements in 8 groups
- “Floating Elements” design



Technical data

Focal length	28 mm
Aperture range	f/2–f/22
Elements/groups	10/8
Focusing range m/ft	0.24–∞/0.79–∞
Field angle* (diag./horiz./vert.)	74/65/45°
Coverage** (cm/inch)	18 x 12/7.1 x 4.7

*Based on 35 mm format. **At close range.

Photo: Richard Schleuning

DISTAGON T* 1,4/35



Creativity in focus: Features a unique combination of wide angle of view with a shallow depth of field due to the fast aperture. This produces exceptional bokeh in the in- and out-of-focus areas, which sets the lens apart from all others. Even at the widest aperture, the lens maintains high image quality.

Design

- Distagon with 11 lens elements in 9 groups
- Lens with aspheric optical surface
- Lens made of special glass with anomalous partial dispersion
- "Floating Elements" design



Technical data

Focal length	35 mm
Aperture range	f/1.4–f/16
Elements/groups	11/9
Focusing range m/ft	0.30–∞/0.9–∞
Field angle* (diag./horiz./vert.)	63/54/37°
Coverage** (cm/inch)	18 x 12/7.1 x 4.7

*Based on 35 mm format. **At close range.



Photo: Dan Busta

DISTAGON T* 2/35



Journalists in focus: The moderately wide angle allows brighter light sources to be integrated into the picture. Its compact design and the short, precise angle of focus rotation make it particularly suitable for journalistic photography.

Design

- Distagon with 9 lens elements in 7 groups
- Lens made of special glass with anomalous partial dispersion
- “Floating Elements” design



Technical data

Focal length	35 mm
Aperture range	f/2–f/22
Elements/groups	9/7
Focusing range m/ft	0.3–∞/0.98–∞
Field angle* (diag./horiz./vert.)	62/53/37°
Coverage** (cm/inch)	19 x 13/7.5 x 5.1

*Based on 35 mm format. **At close range.



Photo: Michael Wartmann

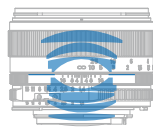
PLANAR T* 1,4/50



Natural brilliance: Standard focal length in the perspective of the human eye. The fast aperture and exceptional compactness are its outstanding features. The lens produces pleasing portrait style quality at the widest aperture and sharpens considerably beyond f/4 for any general purpose application.

Design

- Planar with 7 lens elements in 6 groups



Technical data

Focal length	50 mm
Aperture range	f/1.4–f/16
Elements/groups	7/6
Focusing range m/ft	0.45–∞/1.5–∞
Field angle* (diag./horiz./vert.)	45/38/26°
Coverage** (cm/inch)	24 x 16/9.4 x 6.3

*Based on 35 mm format. **At close range.

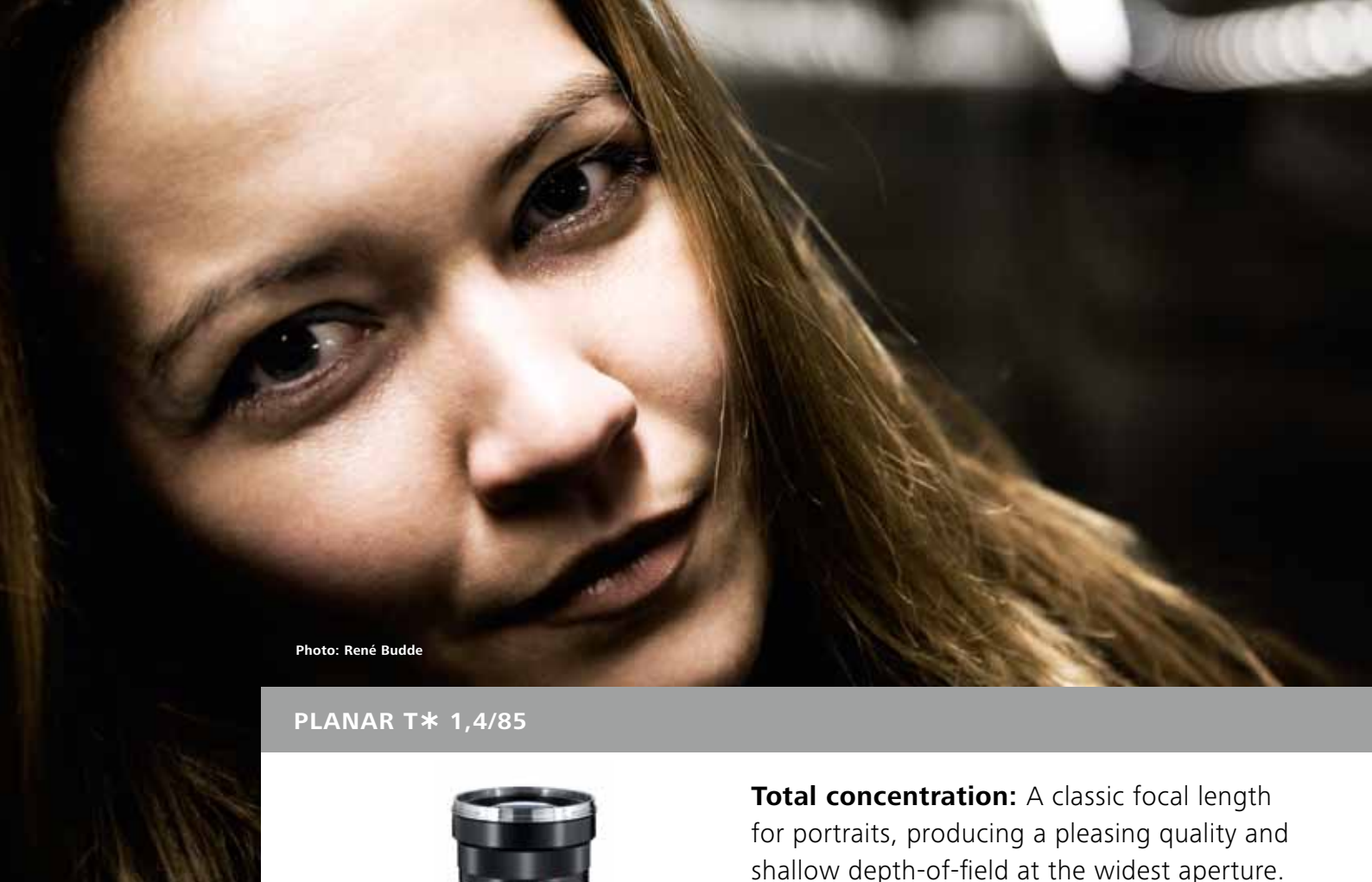


Photo: René Budde

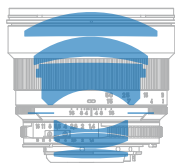
PLANAR T* 1,4/85



Total concentration: A classic focal length for portraits, producing a pleasing quality and shallow depth-of-field at the widest aperture. This is especially suitable for isolating the main subject from the foreground and background. This lens is also suitable as a general purpose lens.

Design

- Planar with 6 lens elements in 5 groups



Technical data

Focal length	85 mm
Aperture range	f/1.4–f/16
Elements/groups	6/5
Focusing range m/ft	1.0–∞/3.3–∞
Field angle* (diag./horiz./vert.)	29/24/16°
Coverage** (cm/inch)	36 x 24/14 x 9.4

*Based on 35 mm format. **At close range.



Photo: Christopher Anderson

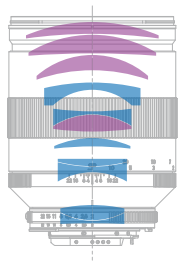
APO SONNAR T* 2/135



So close but yet so far: The high-speed tele lens excels with its excellent color correction and rendition. Thanks to its large aperture and harmonious bokeh, it is perfect for medium-distance portrait photography. Its short closest focusing distance also greatly extends its versatility.

Design

- Apo Sonnar with 11 lens elements in 8 groups
- Lens made of special glass with anomalous partial dispersion
- “Floating Elements” design



Technical data

Focal length	135 mm
Aperture range	f/2,0–f/22
Elements/groups	11/8
Focusing range m/ft	0.80–∞/2.62–∞
Field angle* (diag./horiz./vert.)	18.7/15.6/10.5°
Coverage** (cm/inch)	14.5 x 9.6/5.7 x 3.8

*Based on 35 mm format. **At close range.

Photo: Michael Ankenbrand

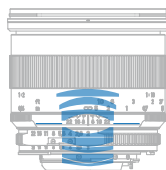
MAKRO-PLANAR T* 2/50



All-round solution: Thanks to high performance at any distance, this macro lens can be used for a variety of tasks. As one of the fastest macro lenses available, small details can be isolated from the foreground and the background for great creative control.

Design

- Planar with 8 lens elements in 6 groups
- “Floating Elements” design



Technical data

Focal length	50 mm
Aperture range	f/2–f/22
Elements/groups	8/6
Focusing range m/ft	0.24–∞/0.79–∞
Field angle* (diag./horiz./vert.)	45/38/26°
Coverage** (cm/inch)	7.2 x 4.8/2.8 x 1.9

*Based on 35 mm format. **At close range.

Photo: Walter Schwab

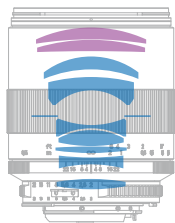
MAKRO-PLANAR T* 2/100



Precision in close-up: Extremely high-speed macro lens perfectly suited to long working distances, e.g. portraits. Its precise mechanical components with a long angle of focus rotation allow for accurate control, critical for close-focus macro photography.

Design

- Planar with 9 lens elements in 8 groups
- Lens made of special glass with anomalous partial dispersion
- “Floating Elements” design



Technical data

Focal length	100 mm
Aperture range	f/2–f/22
Elements/groups	9/8
Focusing range m/ft	0.44–∞/1.4–∞
Field angle* (diag./horiz./vert.)	25/21/14°
Coverage** (cm/inch)	7.2 x 4.8/2.8 x 1.9

*Based on 35 mm format. **At close range.

Carl Zeiss T*

ACCESSORIES



UV filters and POL filters (circular)

Carl Zeiss filters with T* anti-reflective coating optimally protect your front lens. The UV filters afford your pictures more brilliance, the POL filters reduce reflections on non-metallic surfaces and increase color saturation.

- High fitting accuracy for fast filter change
- Can be used with a lens shade
- Available in all standard sizes



Air Cell comfort straps

With patented Air Cell padding, Carl Zeiss camera straps minimize shoulder and neck strain, even with heavy equipment.

- High degree of wearing comfort with Air Cell padding
- Strap length adjustable at both ends



Lens Cleaning Kit

The Carl Zeiss Lens Cleaning Kit is designed for use with multi-coated camera lenses. The cleaning kit is packed in a fabric belt bag and contains:

- Lens cleaning agent
- Dust brush
- Microfiber cloth
- 10 moistened cleaning cloths
- User manual for professional lens care



TECHNICAL DATA

	Length* mm/inch	Diameter* mm/inch (max.)	Weight* g/oz.	Filter thread	ZE	ZF.2
Super wide angle						
Distagon T* 2.8/15	132-135/5.2-5.3	103/4.1	730-820/26-29	M 95 x 1.0	■	■
Distagon T* 3.5/18	84-85/3.2-3.3	87/3.4	470-510/16-18	M 82 x 0.75	■	■
Distagon T* 2.8/21	110-112/4.3-4.4	87/3.4	600-720/21-25	M 82 x 0.75	■	■
Wide angle						
Distagon T* 2/25	95-98/3.7-3.8	71-73/2.8-2.9	570-600/20-21	M 67 x 0.75	■	■
Distagon T* 2.8/25	90/3.5	64/2.5	460/16	M 58 x 0.75		■
Distagon T* 2/28	93-96/3.7-3.8	64-72.4/2.5-2.8	500-580/18-20	M 58 x 0.75	■	■
Distagon T* 1.4/35	120-122/4.7-4.8	78/3.1	830-850/29-30	M 72 x 0.75	■	■
Distagon T* 2/35	97-99/3.8-3.9	64-73/2.5-2.8	530-570/19-20	M 58 x 0.75	■	■

*Dimensions and weight may vary according to the camera mount. Length with caps.

You can find further information on technical data and compatibility at www.zeiss.com/photo



TECHNICAL DATA

	Length* mm/inch	Diameter* mm/inch (max.)	Weight* g/oz.	Filter thread	ZE	ZF.2
Standard						
Planar T* 1.4/50	69–71/2.7–2.8	66–71/2.6–2.8	330–380/12–13	M 58 x 0.75	■	■
Tele						
Planar T* 1.4/85	85–88/3.3–3.5	77–78/3–3.1	570–670/20–24	M 72 x 0.75	■	■
Apo Sonnar T* 2/135	113–116/4.45–4.57	84/3.3	930/33	M 77 x 0,75	■	■
Macro						
Makro-Planar T* 2/50	88–91/3.5–3.6	72–75/2.8–3	500–570/17–20	M 67 x 0.75	■	■
Makro-Planar T* 2/100	113–115/4.4–4.5	76/3	660–680/23–24	M 67 x 0.75	■	■

*Dimensions and weight may vary according to the camera mount. Length with caps.

You can find further information on technical data and compatibility at www.zeiss.com/photo



SHARE YOUR FASCINATION

Better together: Visit ZEISS on the Internet to keep in contact with other photographers, exchange tips and tricks and get regular news updates. On our blog, Facebook, Twitter, Flickr and Vimeo sites, you can find a large community of photographers and videographers from all over the world. We look forward to seeing you there!



zeiss.com/photo



zeiss.com/clnblog



facebook.com/carlzeisslenses



twitter.com/carlzeisslenses



flickr.com/groups/carlzeisslenses



vimeo.com/groups/carlzeisslenses