



A NEW ERA OF CINEMATIC LIGHTING

A New Era of Cinematic Lighting

Redefining the standard

The Rotolight Titan™ X2 is a ground-breaking LED soft light that utilizes state of the art RGBWW technology to provide unparalleled light output, outstanding colour accuracy and a suite of industry-first features designed to enhance your creative possibilities. Featuring over 25 patent protected technologies*, Titan™ X2 represents the pinnacle of LED lighting, pushing the boundaries of innovation and technical excellence.

**includes granted and pending applications*





Bigger. Better. Brighter.

Experience best-in-class power

Titan™ X2 is the brightest 2x1 soft light ever made, and provides enough power to adapt to any lighting situation. Titan™ X2 also performs excellently across the entire CCT spectrum from 2,800K – 10,000K.



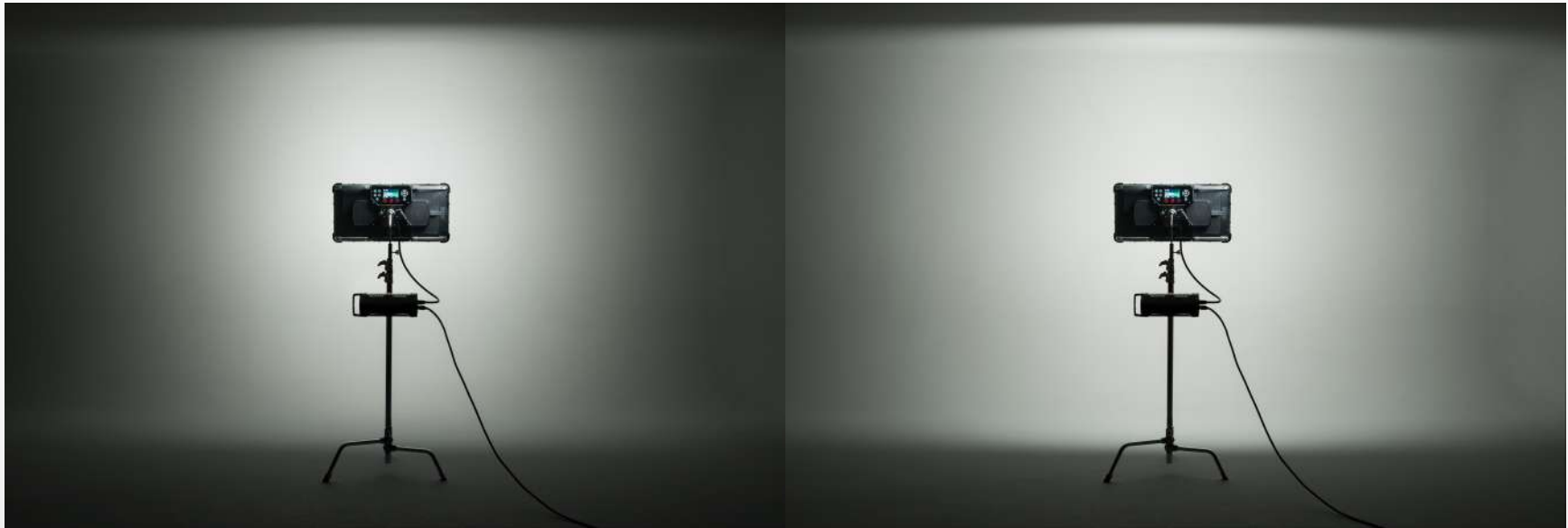




Introducing SmartSoft™

Diffusion with a Difference

A revolution in lighting control, saving both time and money on set, SmartSoft™ allows you to electronically adjust your light's diffusion, focus and spread without the need for gels. With the largest light aperture in its class, Titan™ X2 delivers a gorgeous soft output that wraps flatteringly around your subject and avoids sharp shadows.



SmartSoft™ Diffusion at 0%

SmartSoft™ Diffusion at 100%



A World of Colour at Your Fingertips

Harness over 16.7 million colours in seconds

Featuring an extensive library of over 1300 industry standard gels accessible at the touch of a button, unleash your creativity on set at a moment's notice. With five lighting modes: CCT, HSI, RGBW, XY and Filter, unlock endless possibilities with full control over your colour.



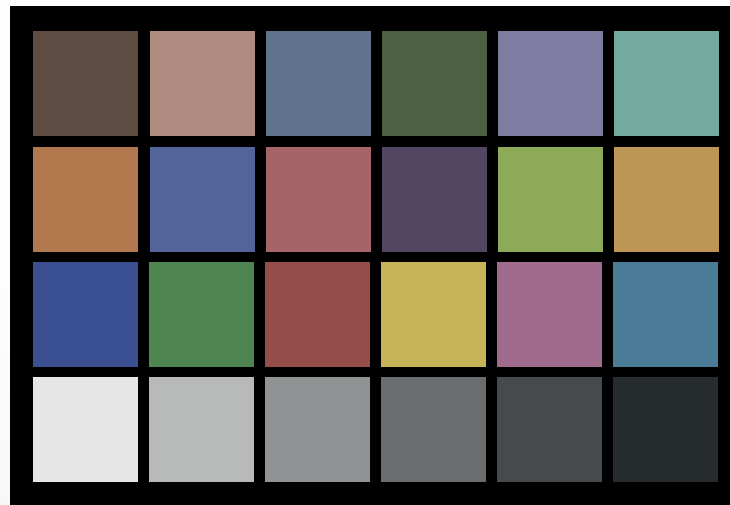


Uncompromising Colour Accuracy

Save time in post-production

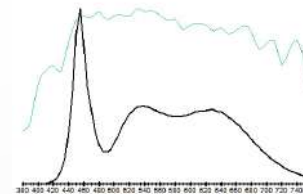
Experience superior colour rendition with Rotolight's specially engineered PentaChromic Colour Engine™ to ensure beautiful, precise skin tones and vivid colour saturation. Excelling in both CRI and TLCI performance, the Titan™ X2 flatters subjects in-camera and reduces the need for post-production.

Rotolight Titan™ X2: CCT = 3200K (-0.1)
TLCI-2019: 98 (3200K)



EBU: TLCI-2019
Measured at 3200K
using UPRTek C600

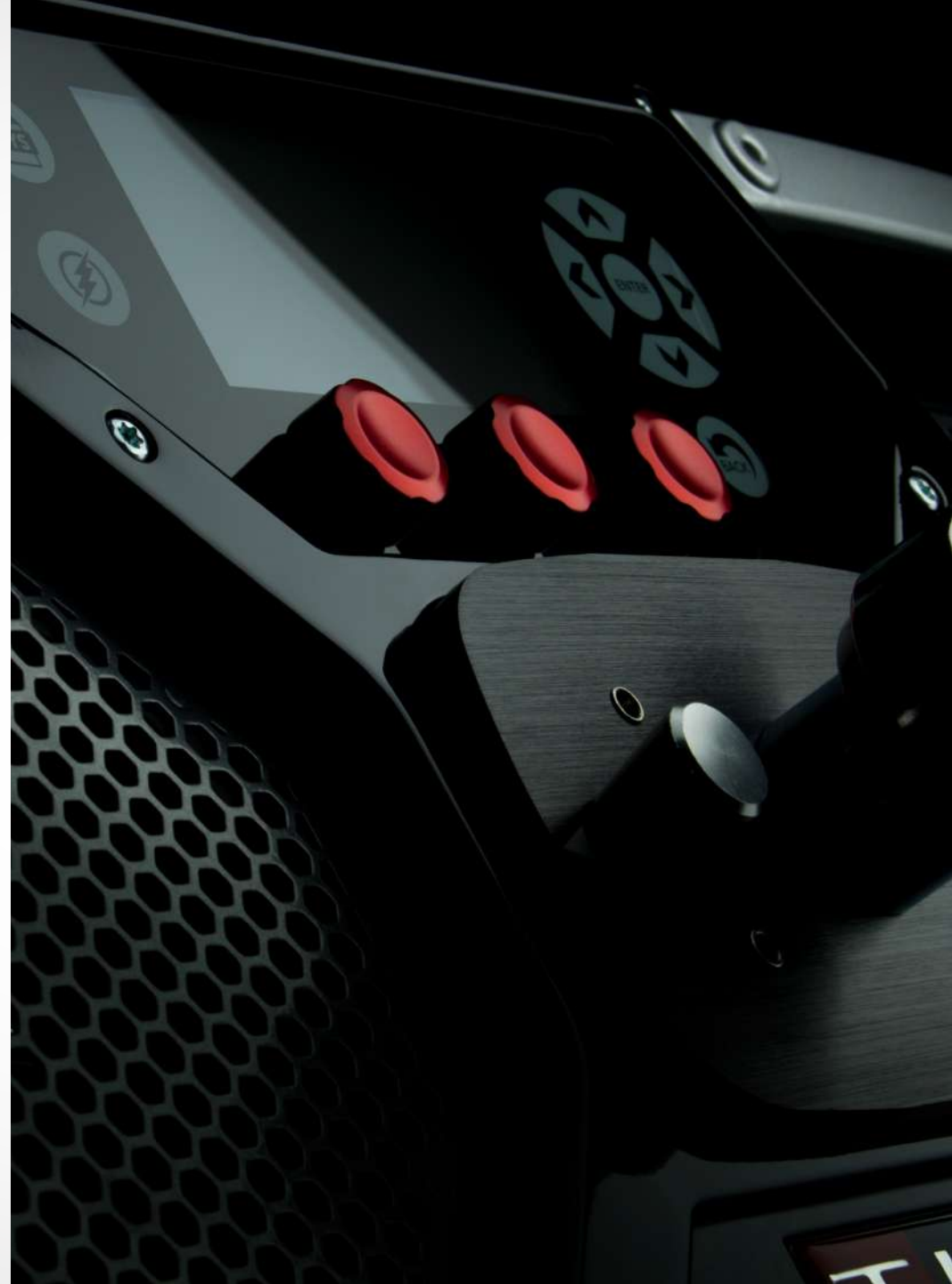
Sector	Lightness	Chrome	Hue
R	0	0	0
R/Y	0	0	-
Y	0	-	-
Y/G	0	-	0
G	0	-	0
G/C	0	0	+
C	0	0	0
C/B	0	0	---
B	0	--	--
B/M	0	-	0
M	0	0	0
M/R	0	0	0



Intuitive. Fast. Responsive.

Functionality without the fuss

Effortlessly access key features with an easy to use interface, quick-start icons, and 10 user customisable presets, saving time on set. With a full-colour touchscreen display, preview Titan's™ extensive filter library to ensure that you achieve the exact colour you want at a moment's notice.





Unrivalled Flexibility

Effortless rigging

Uniquely versatile, Titan™ X2 is supplied with a variety of mounting options, can be positioned at any angle and allows stacking of multiple fixtures for large arrays. Featuring four secure aluminium handles, Titan™ X2 is easy to manoeuvre and fast to setup.



Powerful yet Efficient

The perfect companion in studio or on location

With best-in-class energy efficiency, the Titan™ X2 is a compelling fixture no matter where you're shooting. Lower your operating costs in studio whilst keeping talent cool and reduce servicing bills with a >50,000 hour LED lifespan. Easy to transport, quick to setup and with excellent battery performance, Titan™ X2 is equally at home or on location.





Fire



Lightning



TV

Cutting-Edge Special Effects

The ultimate creative arsenal

Our award-winning suite of CineSFX™ (Fire, Lightning, TV, Gunshot, Paparazzi and more) allow you to add drama to a scene at a moment's notice. Customize, save and instantly recall your favourite settings to reduce time on set. Designed in conjunction with Stefan Lange, visual FX veteran (*Batman*, *James Bond Skyfall*, *Tomb Raider*), CineSFX™ utilizes Titan's RGB engine to deliver realistic full-colour lighting effects.

CineSFX™ Suite



FIRE



LIGHTNING



CYCLE



POLICE



GUNSHOT



FILM



NEON



FIREWORKS



SPARK WELD



PAPARAZZI



PULSE



TV



FADE



CHASE



↑
⏪
⏩
⏹

TITAN

ROTOLIGHT

Engineered to Last

Quality you can depend on

Individually hand-calibrated and crafted using the highest quality materials, Titan™ X2 delivers consistently outstanding performance and years of reliable service. Designed and manufactured in the UK to uncompromising aerospace standards, the Titan™ X2 represents the very latest in LED technology in a sleek yet robust package.



Designed & Engineered at Pinewood Studios, UK



Your Lighting Your Way

An unprecedented level of control

With the added benefits of Bluetooth connectivity (for app control)*, LumenRadio*, wired/ wDMX, built-in Elinchrom Skyport receiver and RJ45 as standard, Titan™ X2 provides full control straight out of the box.

**Bluetooth connectivity and LumenRadio control coming Q1 2020*



Compatible with:

Luminair 3

A giant leap forward for professional-grade mobile lighting control





Featuring High Speed Sync Flash

More power when you need it

Ideal for high-end studio and portrait photographers, Titan™ X2 uniquely offers High Speed Sync flash (1/8000th) with powerful output and zero recycle time, for flash that can keep up with you. Titan™ X2 can be wirelessly triggered at up to 656ft (200m) with the Rotolight HSS transmitter and integrated Elinchrom Skyport flash receiver, available for all major camera brands.



Accessories



Titan with Standard Yoke

SKU: RL-TITAN-X2-Y



Titan with Pole Operated Yoke

SKU: RL-TITAN-X2-P



Titan with Swan Neck

SKU: RL-TITAN-X2-S



DOP Choice™ SnapBag

SKU: RL-TITAN-X2-SB



DOP Choice™ SnapGrid for SnapBag (40 °)

SKU: RL-TITAN-X2-SGSB



DOP Choice™ SnapGrid for Titan

SKU: RL-TITAN-X2-SGT

Accessories



Barn Doors

SKU: RL-TITAN-X2-BD



Rain Cover

SKU: RL-TITAN-X2-RAIN



Titan Flight Case

SKU: RL-TITAN-FLC



Spare PSU

SKU: RL-TITAN-X2-PSU



Soft Bag

SKU: RL-TITAN-X2-SOFT



Titan Clamp

SKU: RL-TITAN-X2-CLAMP

	1m / 3.3ft		3m / 9.8ft		5m / 16.4ft		7m / 23 ft		9m / 29.5 ft	
ROTOLIGHT TITAN™ X2	3200K	5600K	3200K	5600K	3200K	5600K	3200K	5600K	3200K	5600K
Titan™ X2 no diffusion	15525 lx 1442 fc	16800 lx 1561 fc	2220 lx 206 fc	2415 lx 224 fc	953 lx 88 fc	983 lx 91 fc	543 lx 50 fc	524 lx 48 fc	365 lx 34 fc	351 lx 32 fc
Titan™ X2 50% diffusion	11700 lx 1087 fc	16200 lx 1505 fc	2003 lx 186 fc	2310 lx 215 fc	848 lx 78 fc	930 lx 86 fc	511 lx 47 fc	503 lx 47 fc	320 lx 29 fc	343 lx 32 fc
Titan™ X2 full diffusion	9225 lx 857 fc	10425 lx 968 fc	1500 lx 139 fc	1470 lx 137 fc	582 lx 54 fc	604 lx 56 fc	318 lx 29 fc	325 lx 30 fc	209 lx 19 fc	219 lx 20 fc
Titan™ X2 with intensifier	16650 lx 1547 fc	18375 lx 1707 fc	2258 lx 209 fc	2498 lx 232 fc	960 lx 89 fc	1016 lx 94 fc	544 lx 50 fc	518 lx 48 fc	373 lx 35 fc	363 lx 33 fc
CRI	95 Skintone R15 = 98									
TLCI (UPRTek)	98									

**Provisional Photometrics tested in September 2019 using a Sekonic C7000, Titan™ X2 in Max Lux mode*

LED System	Rotolight PentaChromic Colour Engine™	Coloured Light	Full RGBWW colour gamut with Hue, Saturation and Diffusion Control
Diffuser System	Rotolight SmartSoft™ Diffusion	Colour Temperature Tolerance	+/- 50 K (Nominal), +/- 5% Green-Magenta (Nominal)
Light Aperture	650 x 300 mm / 25.6" x 11.8"	CRI	5600K >95 3200K >95 Skintone R15 = 98
Beam Angle	Electronically variable 68 degrees to 150 degrees	TLCI	98
Weight	Titan™ X2 body: 10.6kg / 23.3 lbs Titan™ X2 + Standard Yoke: 13.1kg / 28.8 lbs Titan™ X2 + Pole Operated Yoke: 14.6kg / 32.1 lbs Titan™ X2 + Swan-Neck: 11.5kg / 25.3 lbs	Green-Magenta Adjustment	Continuously variable (full minusgreen to full plusgreen)
Dimensions	Titan™ X2 body: 350 x 150 x 705mm 13.7" x 5.9" x 27.7" Titan™ X2 body + Standard Yoke: 546 x 158 x 840mm 21.4" x 6.2" x 33" Titan™ X2 body + Pole Operated Yoke: 532 x 139 x 814mm 20.9" x 5.4" x 32" Titan™ X2 + K-Mount Swan Neck: 350 x 295 x 705mm 20.9" x 5.4" x 27.7"	Dimming	0 - 100 % continuous
Handling	Pole Operated Yoke (Pan and Tilt), Standard Yoke, K-Mount Swan-Neck with Baby 16mm Socket	Diffusion	0 - 2 stops continuous (0%- 100%)
Mounting	28mm Junior Spigot or 16mm Baby Spigot (K-Mount Swan-Neck)	Control	Local 5 pin DMX, RJ45, Bluetooth*, LumenRadio*, wired/w.DMX, Elinchrom Skyport. <i>*Bluetooth connectivity and LumenRadio control coming Q1 2020</i>
Tilt Angle	+/- 90 Degrees	Remote Device Management (RDM)	DMX Setup, Hour Counter, and Standard RDM Commands
Lamphead DC Voltage Input	24 V DC	Flash	Skyport HSS (range 200M), up to 1/8000th sec
Power Consumption	420W Nominal	Software Interface	Firmware/software upgrade via USB-A
Lamphead Power Connection	Neutrik Speakon (Positive Pin 1+ 2+ / Negative Pin 1- 2-)	Factory Interface	Firmware installation, system configuration and calibration interface
Battery DC Voltage Range	20.5 V DC to 26 V DC	Housing Colour	Black, red and silver
Battery Mode Light Output	4 way Adapter : 50%	Ambient temperature operation	-20 to +45 C (-4 to 113 degrees Fahrenheit) Active Intelligent Thermal Management
White Light	2800K to 10,000K continuously variable Correlated Colour Temperature	Protection Class / IP Rating	IP20
		Estimated LED Lifetime (L70)	50,000 Hours
		Estimated Colour shift over lifetime (CCT)	+/- 5 %
		Certifications	CE, FCC*, UL*, TUV*

*pending



www.rotolight.com | sales@rotolight.com | +44 1753 422 750