

SOLUTIONS FOR LIVE VIDEO & TELEVISION PRODUCTIONS



LIVEXPERT IS A BRAND OF  3D STORM

LiveXpert™

ON-AIR, DOWN TO EARTH!

LiveXpert™ is a range of tools carefully selected to make life easier for all video production operators. The key criteria are: time saving at every stage from set-up to take-down, user-friendliness and rationalized data exchange for workstations, optimized investment budget and operating costs, and great stability for live broadcasts.

LiveXpert software and devices round out the control room equipment in TV studios and conference facilities, mobile control rooms for entertainment and sports events, as well as outside broadcast vans.



For TriCaster™ 410/450/450
Extreme/455/460/850/850
Extreme/855/860/8000



For all mixers and TriCasters



For TriCaster™ only



3D Storm is a member of the **NewTek Developer Network**.

With LiveXpert, 3D Storm offers a set of services to promote, distribute and support developers through a worldwide distribution network.


NewTek Developer Network represents a growing ecosystem of companies and products. Many organizations

are developing and integrating their applications using a series of software development kits provided and supported by NewTek.

Through these developers, NewTek users benefit continuously from new products and workflows, and experiencing greater value through a breadth of additional functionality.



www.newtek.com/solutions/newtek-developer-network.html

LIVEXPERT IS A BRAND OF  **3D STORM**

LiveCG Broadcast™

**MULTILAYER CHARACTER GENERATOR
WITH DYNAMIC SOCIAL NETWORK MANAGEMENT.**

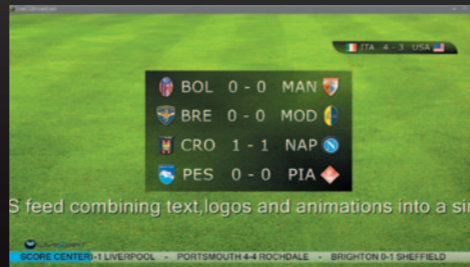


Two models are available:

✓ **LiveCG Broadcast IP for TriCaster and 3Play:**
Thanks to the direct AirSend link via Ethernet network, LiveCG Broadcast IP does not use any of the video input ports.

✓ **LiveCG Broadcast SDI for all video mixers:**
In addition, this model is equipped with an SDI SD/HD video input and output card with key signal management and a Genlock input port. LiveCG Broadcast SDI may be used as the input or output for a professional video mixer.

LiveCG Broadcast™ integrates all the tools for creating and broadcasting the graphics required for high-quality, professional video productions. The system is capable of generating still and animated titles and logos, still and rolling credits, clocks and counters, as well as dynamic broadcasting of data from external sources: RSS feeds, text files, and spreadsheets.



LiveCG Broadcast™

SOCIAL HUB

Thanks to the included Social Hub module, **LiveCG Broadcast** may be connected to social networks, including Facebook®, Twitter®, Flickr®, and WhatsApp® to broadcast incoming messages in real time.

Technical specifications:

- ✓ Text, logos, and still and animated graphics
- ✓ Supports TGA, BMP, PNG, TIF, and JPG formats, GIF sequences, and FLASH animations (.swf)
- ✓ 32-bit management with transparency (Alpha Channel)
- ✓ Effects: shading, blur, motion blur, smooth edge
- ✓ Object transitions: fade in/out, shift, zoom
- ✓ 1U compact rack

Social Hub may be installed on a dedicated workstation, connected to LiveCG Broadcast, so that a moderator can approve the broadcasting of incoming messages. It is supplied with a USB port GSM modem for receiving and processing text messages.



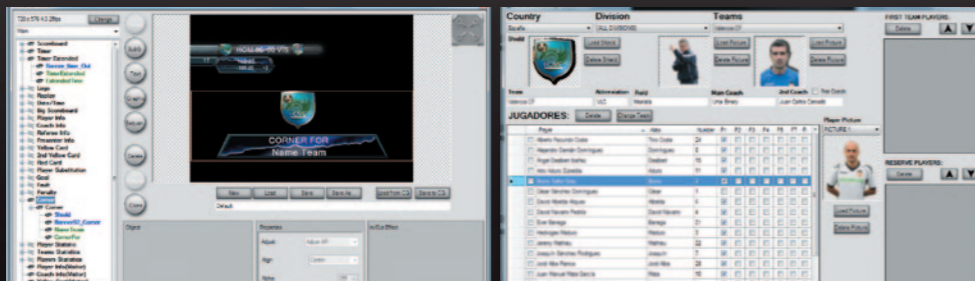
LiveCG Football™

SCORING AND PRESENTATION SOFTWARE FOR FOOTBALL

LiveCG Football is the ideal tool for managing real-time graphic animation, timers, scoring for Stadiums and TV productions. Several major European clubs have adopted it for composing game sheets, presenting players, displaying statistics and scores, highlighting sponsors, etc. Using a dedicated workstation connected to the TriCaster via the network, the operator keeps all the information on the players, referees, and commentators in an integrated database to produce game compositions and player presentations with a few clicks of a mouse. The **LiveCG Football** editing system makes it possible to customize all the graphics to suit the club identity guidelines and different types of competitions.

LiveCG Football generates automatic clocks to display official game time, injury time, and extra time. Every play can be highlighted with a customized animation, triggered live by the operator by clicking on a button: goals, offsides, red and yellow cards, replaced players, penalties, corners, penalty kicks, etc.

LiveCG Football can be used to track various types of information and display statistical charts during the game: percentage ball possession per team, shots on goal, number of shots, goal opportunities, decisive passes, number of passes, and fouls by or to players.



LiveCG Tennis™

SCORING SOFTWARE FOR TENNIS

LiveCG Tennis includes dedicated user interfaces for tennis games, to generate scores and timer in real time, for TV productions, stadiums and arenas.

Scoring templates can be fully customized with the integrated graphic editor supporting still images (JPG, BMP, TGA, PNG), images sequences and flash® animations (SWF).

Information such as team composition, player's statistics or advertising can be imported automatically to be displayed during the game, with a single mouse-click.



LiveCG TeD™

CONNECTION PLUG-IN TO SCORE TABLES FOR BASKETBALL

LiveCG TeD is a module for LiveText 2.5 software for real-time processing of times, scores, and data from the score tables used by the referees during basketball games.

LiveCG TeD converts the flow of information in real time to update a file in .txt format, constantly scanned by LiveText and displayed on the live feed.

Technical specifications:

- ✓ Supports the following score tables: Bodet, Stramatel, Grunewald, ACB
- ✓ RS 232 protocols may be added.



FingerWorks™

TELESTRATION TOUCHSCREEN FOR TRICASTER AND 3PLAY

FingerWorks IP is a graphics workstation for live illustration of news, sports, scientific presentations, etc. Its wide touchscreen makes it easy for broadcasters to highlight their commentaries with animated symbols, to focus attention on the most important aspects of an image, draw a trajectory, illustrate a procedure, etc.

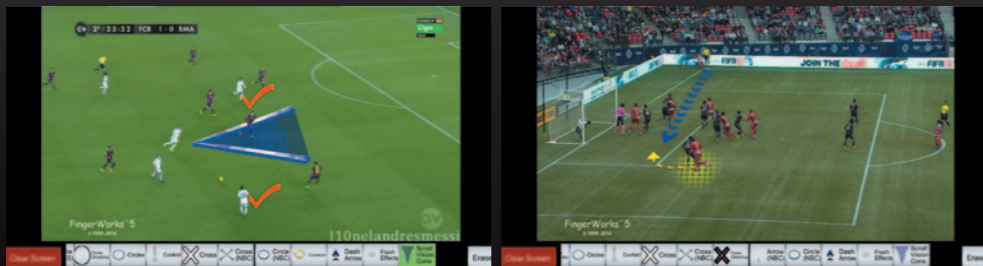
The graphic effects are sent automatically to the TriCaster for live broadcasting during the commentary.

The **FingerWorks** system is particularly well-suited to explaining tactics on an image of the start of an action, animating political or weather maps to provide live illustrations of changing influences, tracking storms, displaying offside lines during large-screen sports broadcasts, explaining refereeing rules, etc.

Every journalist has a range of customizable tools at his fingertips, to use directly on the screen. In addition to lines, curves, and geometrical shapes, FingerWorks functions include dynamic zooms, glowing halos, a large palette of animated arrows, and a library of animated 3D objects.

Technical specifications:

- ✓ 3U rack, depth 30 cm
- ✓ 16 GB RAM, 3TB hard disk.
- ✓ Standard 24-inch touchscreen
- ✓ SDI video input and output
- ✓ Direct AirSend link for TriCaster and 3Play



LiveControl Box™

ETHERNET TO GPI AND QUAD RS-232/422 HARDWARE INTERFACE

LiveControl Box is the requested interface to manage GPI trigger for TriCaster and LiveCG Broadcast. It supports simultaneously 24 GPI inputs and 24 GPI outputs. The GPI ports on the rear of the Box are 25 pin D-sub connectors.

LiveControl Box acts as a portal for controlling devices across a LAN, WAN and over Internet : VCR's, DDR's, video routers, switchers, projectors...

LiveControl Box simplifies long distance cabling by using IP addressable, point-to-point architecture to send control messages over existing 10/100 BASE-T wiring.

LiveControl Box Ethernet port is just like an Ethernet port on a computer, and can be connected to a hub, switch or router.

Configuration is accomplished through a web page server built into the box.



Technical specifications:

- ✓ Communicates over standard TCP/IP
- ✓ Traffic can be routed over internal LANs, wireless LANs, MANs, WANs and even over the Internet
- ✓ Requests TriCaster version 2.3 and above
- ✓ Dimension: 21,6x11,94x4,45 cm
- ✓ Weight: 1,5 Kg



LiveTally Air™

SMART & VERSATILE WIRELESS TALLY LIGHTS SYSTEMS



LiveTally Air receivers are powered by an internal battery that can be recharged using the transmitter's power supply block. The receiver comes in a professionally finished, lightweight, tough case. It has a large red LED on the fascia for the people on the set, and a small red and small green LED at the back for the cameraman.

Technical specifications:

- ✓ Management of the Tally Program and Preview depending on the mixer capabilities
- ✓ Supports up to 8 LiveTally Air receivers
- ✓ Wireless transmission on the free frequency of 433MHz

LiveTally Air is the simplest solution you could imagine for fitting Tally lights to your video cameras. There are no cables to run; just fit a LiveTally Air receiver to each camera, power up, and they will be automatically recognized by the transmitter connected to your mixer.



LiveTally Remote™

LiveTally Remote is a strong-built and reliable solution to equip your production studio with Tally lights. The package comprises a transmitter box connected to the video switcher and up to 8 receiver boxes fitted with LED's to be placed on the cameras. The receivers are connected to the transmitter using standard CAT5 Ethernet cables.

The receiver comes in a professionally finished, lightweight, tough case. It has a large red LED on the fascia for the people on the set, and a small red and small green LED at the back for the cameraman.



Technical specifications:

- ✓ Management of the Tally Program and Preview depending on the mixer capabilities
- ✓ Supports up to 8 LiveTally Remote receivers

LiveTally Converter™

LiveTally Converter is an adapter for TriCaster HD models that converts the Tally connector into closed contacts. LiveTally Converter is a smart cable that plugs in one end to the TriCaster tally port and provides a standard DB15 connector with closed contacts only on the other end.

Technical specifications:

- ✓ Small box with 15 pins (DB15) female connector
- ✓ 40 cm long cable





GRAPHICS

SPORT

INTERFACES

AUTOMATION

LiveMixer™

TRICASTER AUDIO MIXER REMOTE CONTROL

LiveMixer is an exclusive add-on that provides the ability to connect a Behringer BCF2000 or a Yamaha 01V96i to any TriCaster HD model, in order to remotely control the audio mixer functions of the TriCaster.

The audio panels are connected to one USB port of the TriCaster, using the USB-to-MiDi adapter included.

LiveMixer can be easily configured by independently linking each audio channel of the TriCaster to a fader of the audio mixer, or by mixing audio sources apart from the TriCaster and controlling all internal sources (DDR's, Sound, NET...) and outputs from the external audio mixer.

LiveMixer provides a bidirectional control, any fader change from the audio mixer updates the graphic interface of the TriCaster, and vice-versa.

Technical specifications:

- ✓ Presets for different TriCaster models or custom presets.
- ✓ Control over audio level, Solo, Mute, Pan, Follow functions from all TriCaster audio channels.

LiveMixer



GRAPHICS

SPORT

INTERFACES

AUTOMATION

LiveXpert

LiveMixer Remote™

REMOTE CONTROL AND AUTOMATION TOOLS FOR TRICASTER


LiveMixer Remote is a set of remote-control tools for TriCaster, used to:

- Set up a remote sound operator position: an independent, dedicated workstation with its own mixing console, separate from the TriCaster. The sound operator workstation is connected to the TriCaster via RJ45 and has its own on-screen, graphic interface.
- Automate multi-camera capture to focus on each speaker, thanks to the DBSwitch function, developed for automated sound capture during radio broadcasts, as well as conferences and conventions. It combines the TriCaster's powerful macro editor with rules for detecting the sound level on each audio feed of the video mixer.
- Trigger the TriCaster macros remotely from a TV studio or speaker's podium.

Technical specifications:

- ✓ Supports Behringer BCF-2000 and Yamaha 01V96i
- ✓ Supports Midi Launchpad tablets
- ✓ Integrates a LiveMixer license to be installed on TriCaster
- ✓ Supplied with a USB/Midi adapter



LIVEXPERT IS A BRAND OF  3D STORM



NewsCaster™

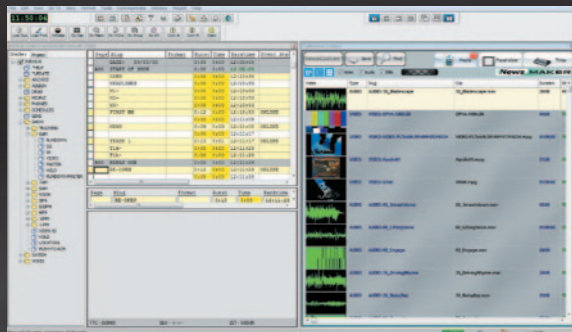
NewsCaster is a Newsroom Automation product that integrates Broadcast Newsroom Computer Systems with the TriCaster product line. The TriCaster operator no longer needs to manually set up the show and drop what they are doing to make adjustments while on-air. Playout sequencing will all be done under the control of the Newsroom Computer System. Whole shows are uploaded and then updates automatically applied, without the assistance of the TriCaster operator.

NewsCaster connects your Newsroom Computer System to the TriCaster by actively linking the TriCaster DDR, Text, GFX, and Sound MediaBins to a NRCS Rundown. NewsCaster uses

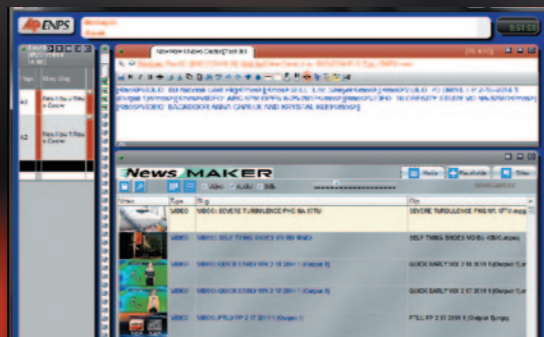
MOS ready ActiveX Plugins and the MOS Protocol to interact with the Newsroom System.

Technical specifications:

- ✓ Compatible with ANNova OpenMedia, AP ENPS, Avid® iNEWS®, NorCom CPower and Octopus.
- ✓ 1RU Rack running Windows 7
- ✓ 6x Gigabit Ethernet ports
- ✓ 2 x 1TB system drive, 2 x 4TB data drives
- ✓ Redundant power supply.



Integration into iNews®



Integration into ENPS®



3D Storm is run by a team with over 25 years' experience in converging IT-video technologies, who have worked with NewTek since 1989.

Since 1999, **3D Storm** has specialized exclusively in distribution and support for products developed by NewTek, with the aim of providing a full range of services for broadcasters.

Training center:

3D Storm offers a full range of training courses, in several languages, on the use of TriCaster control systems and 3Play slow-motion servers, as well as designing virtual sets.

Certification center:

Several times a year, on request, **3D Storm** organizes certification sessions for TriCaster and 3Play users.

Contact the following address for further information:

certification@3dstorm.com

Maintenance and repair center:

3D Storm technical department, based in Bordeaux - France, manages under- and out-of-warranty after-sales service, entirely on site - no factory returns - exclusively using spare parts certified by NewTek.

Assistance and Warranty Extensions:

Many user services are available: phone and email support, warranty extensions from 6 to 24 months, Plus Gold Star service with equipment loan in 24 hours.

For further information, go to: www.3dstorm.com

SOLUTIONS FOR LIVE VIDEO & TELEVISION PRODUCTIONS



www.3dstorm.com

NewTek Official Master Distributor

70, Avenue de Capeyron - 33160 Saint-Medard-en-Jalles, France - T: + 33 (0) 5 57 262 262 - F:+ 33 (0) 5 57 262 261 - info@3dstorm.com

NewTek and TriCaster are trademarks of NewTek. All other products or brand names mentioned are trademarks or registered trademarks of their respective holders. All Rights Reserved - ©3D Storm 2015