

SWIT®

Pocket V-mount

PB-M146S 146Wh



146Wh Large Capacity



- 14.4V 146Wh / 10.1Ah large capacity
- 100×74×63.7mm tiny size
- D-tap×1; USB-A×1
- 150W 12A constant high load

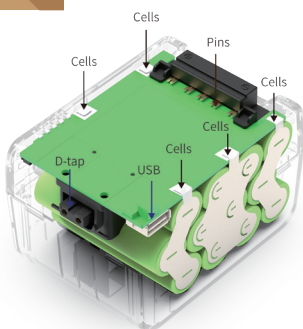


Dual Batteries Hot Swap

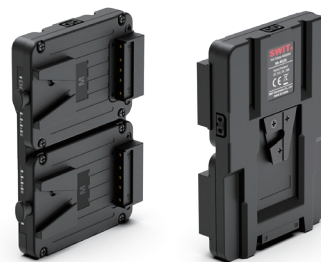
You can use 2x PB-M146S hot-swappable on cameras, by the Hot-swap Adaptor KA-M20S, to get one-by-one hot swap uninterrupted power, and equivalent to a standard size V-mount battery.



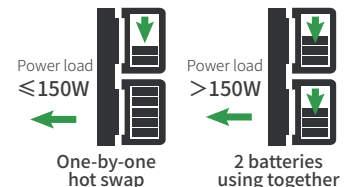
Wire-Free Internal Tech



PB-M series batteries have “Wire-Free” internal technic. All the cells, D-tap, USB, power indicator devices are directly soldered onto PCB, no connecting wires, to reduce internal resistance effectively, and make the circuit stable, safe, and reliable.



KA-M20S
Fit SWIT PB-M45S/98S/146S



- V-mount hot swap plate
- Fit 2x PB-M series batteries
- Hot swap status indicators
- SONY & RED display power info
- 2×D-tap power output

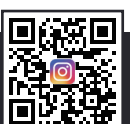
SWIT Electronics Co., Ltd.
+86-25-85805753
<http://www.swit.cc>
Email: contact@swit.cc

SWIT Electronics America, Inc
1-(408)260-8258
<http://www.switusa.com>
Email: info@swit.us

SWIT Electronics Europe GmbH
+49(0)21316632331
<http://www.switeu.com>
Email: info@swit-europe.com



Facebook Page



Instagram