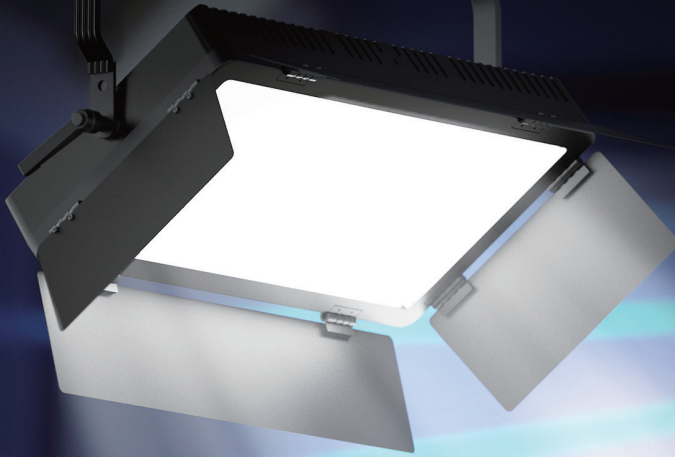


SWIT

100W Bi-Color Studio SMD Panel LED Light

CL-100D



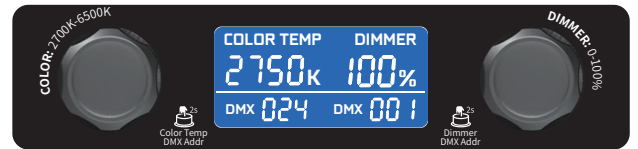
100W, 3300Lux@1m

CL-100D is a 100W 2:1 studio panel light, consists of 1440pcs long life SMD LEDs, 3300Lux @ 1m high bright luminance, with DMX control, high CRI / TLCI and accurate color performance, for broadcast studio, mobile studio, live streaming studio install applications.



2700K-6500K Continuous

CL-100D adopts 4-step MacAdam Ellipse SMD-LEDs, consists of 100W 2700K LEDs and 100W 6500K LEDs, and can be continuously adjusted between 2700K and 6500K.



Independent DMX Addr Setting

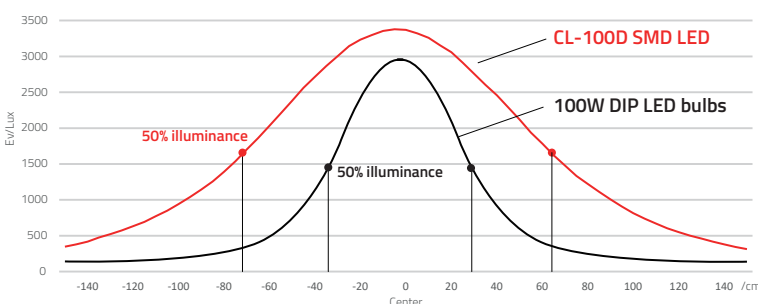
CL-100D can set independent DMX addresses for Dimmer and Color temp. For example you can set Color temp DMX 024 for every light, and Dimmer DMX 001, 002, 003... sequentially, to save sliders on the console.

Soft Wider Beam Angle

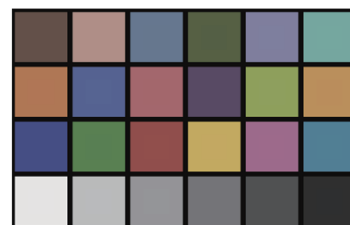
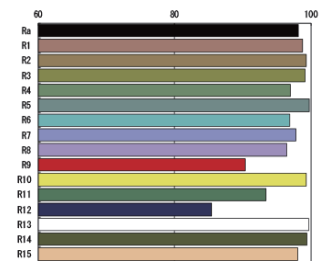
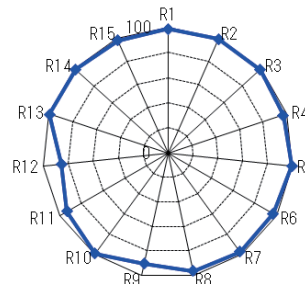
The CL-100D SMD LEDs have wider beam angle comparing to the traditional DIP LED bulbs. It will generate an equally spread area light from center to edge, instead of a glaring light spot that suddenly declined from center to edge.

The wider angle equally spread light produces a nature light environment in studio.

Beam angle testing at 1 meter



CRI 97; TLCI 99



Sector	Lightness	Chroma	Hue
R	0	0	0
R/Y	0	0	0
Y	0	0	+
Y/G	0	0	0
G	0	0	0
G/C	0	0	0
C	0	0	0
C/B	0	0	+
B	0	0	0
B/M	0	0	0
M	0	0	0
M/R	0	0	0



Power and Control

5-pin DMX512 IN & OUT

5V USB power output

Optional: LA-WR8 Wireless DMX Receiver

Optional: LA-G100 40° Honeycomb

Color Temp 2700-6500K
Long Press: To set DMX address of Color Temp

COLOR TEMP DIMMER
2750K 100%
DMX 024 DMX 001

DIMMER 0-100%
Long Press: To set DMX address of Dimmer

PowerCON TRUE1 AC IN & LOOP OUT

Included: TRUE1 AC Cable

Optional: TRUE1 Loop Cable PA-LC20
2 meters length, Max 16A load;
220V: Loop up to 25x CL-100D
110V: Loop up to 13x CL-100D



Specifications

Model	CL-100D
LEDs	1440pcs SMD LEDs
Color Temp	2700K-6500K
Illuminance	3300Lux @ 1m
Beam angle	65° half peak
Color Render	CRI 97; TLCI 99
DMX	5-pin XLR DMX in & out
Input Voltage	AC 100-240V, 50/60Hz PowerCON True1 in & out
Power	100W
Net Weight	3.2kg incl. Barndoors

