

LILLIPUT®

Dual 12G-SDI Rack mount monitor for broadcast & live streaming.
Application for video wall & broadcast trucks.

12G-SDI 3RU HIGH-BRIGHT

RACK MOUNT MONITOR



1000 Nits



1920×1200



HDMI2.0 / 12G-SDI



Remote Control



3RU Rack Mount

RM7026-12G

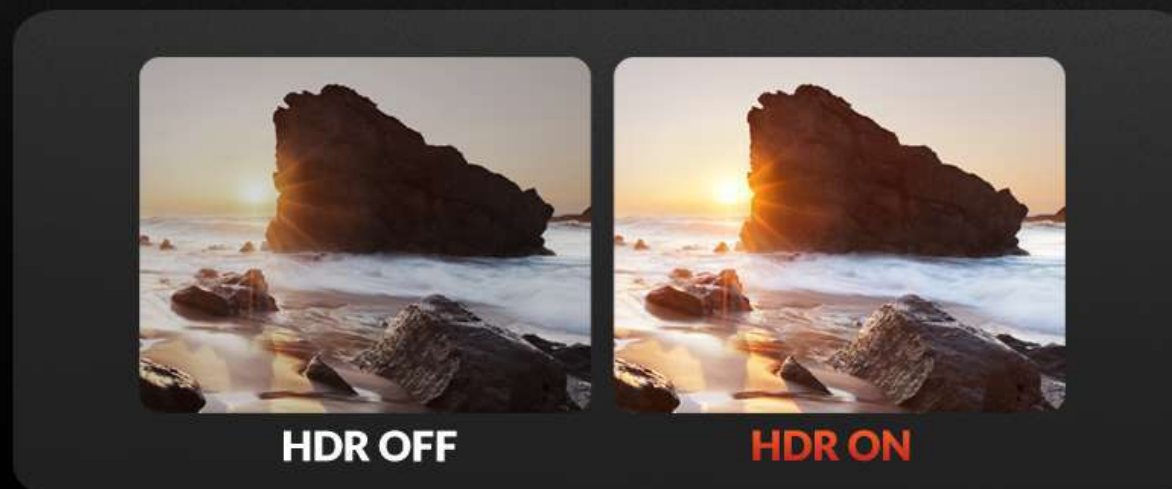


1000 nit

HIGH-BRIGHT



With up to 1000 nits brightness, people can get clear and bright colors even when using outdoors.



HDR

Making lighter and darker details to be displayed more clearly. Support ST2084 300 / ST2084 1000 / ST2084 10000 / HLG.

12G-SDI / HDMI 2.0

The monitor supports 4K video signal input and loop output, video signals up to 4K 60Hz.



HDMI 2.0

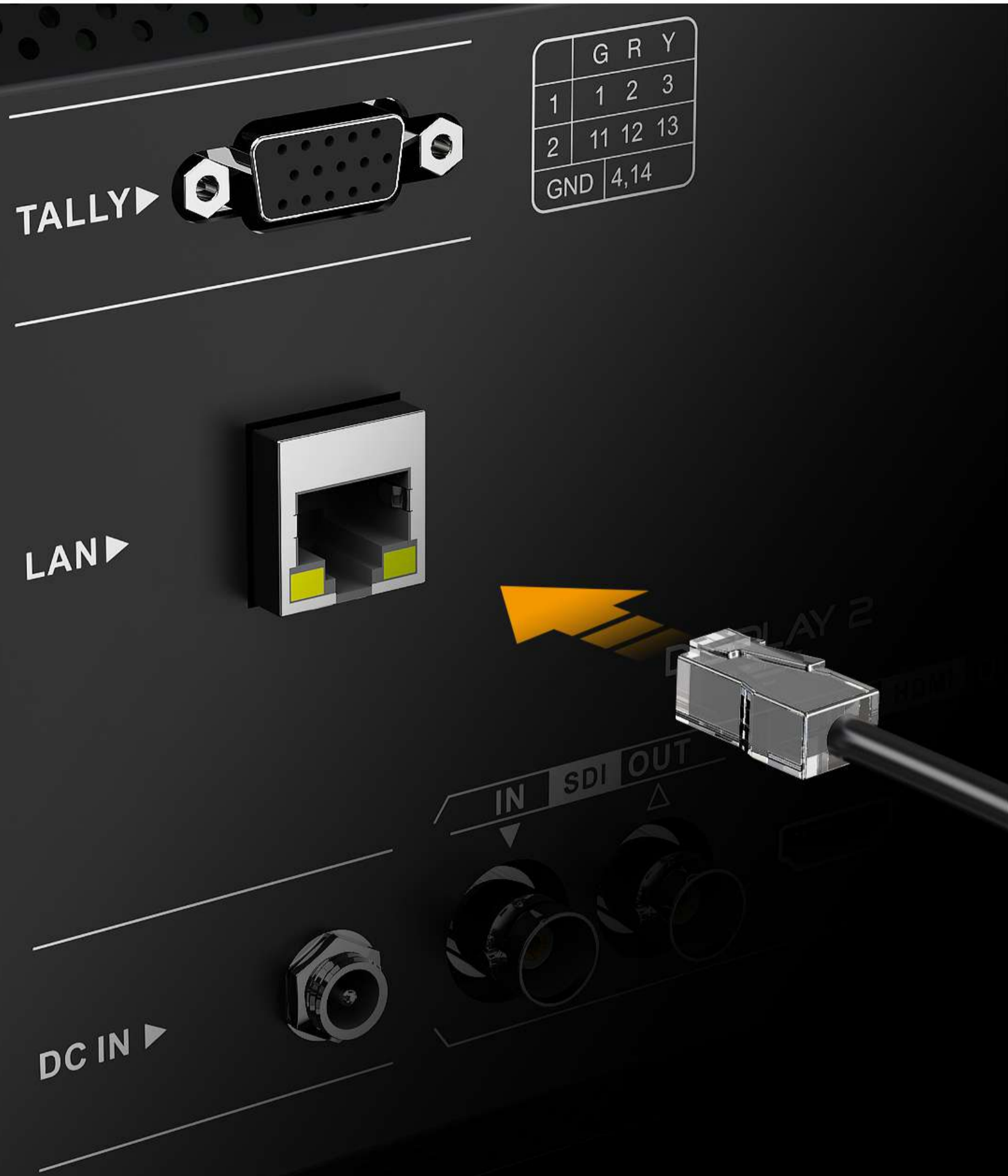
UP TO 2160P 60HZ

Equipped with HDMI 2.0 input and loop output interfaces, which support up to 2160p 60Hz video signal.

12G-SDI

UP TO 2160P 60HZ

Equipped with 12G-SDI input and loop output interfaces, which support up to 2160p 60Hz video signal.



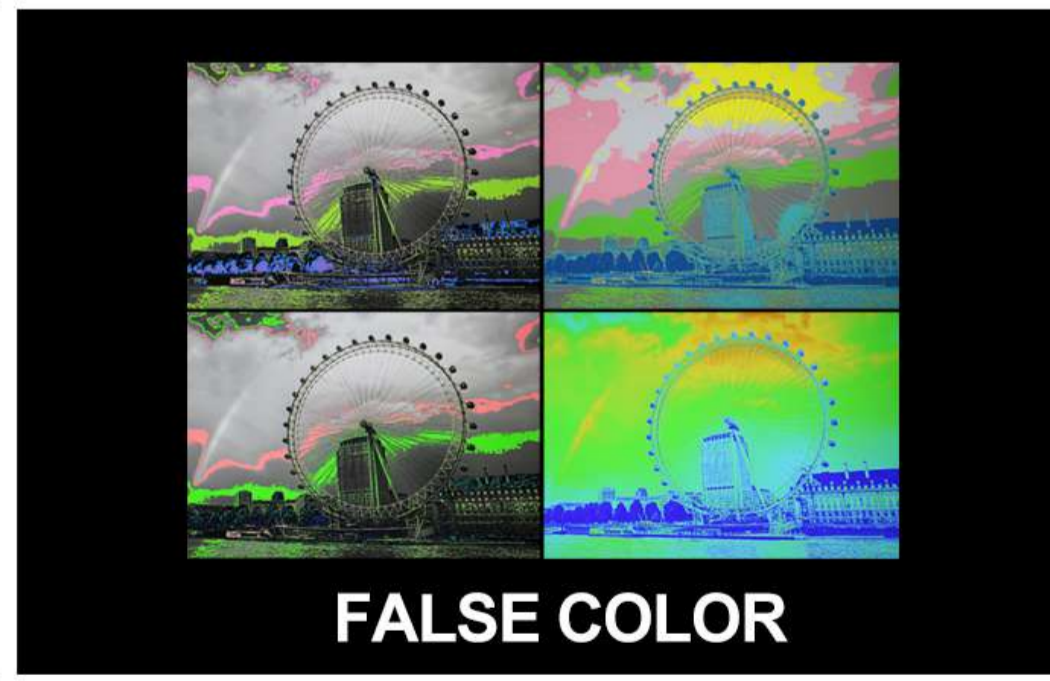
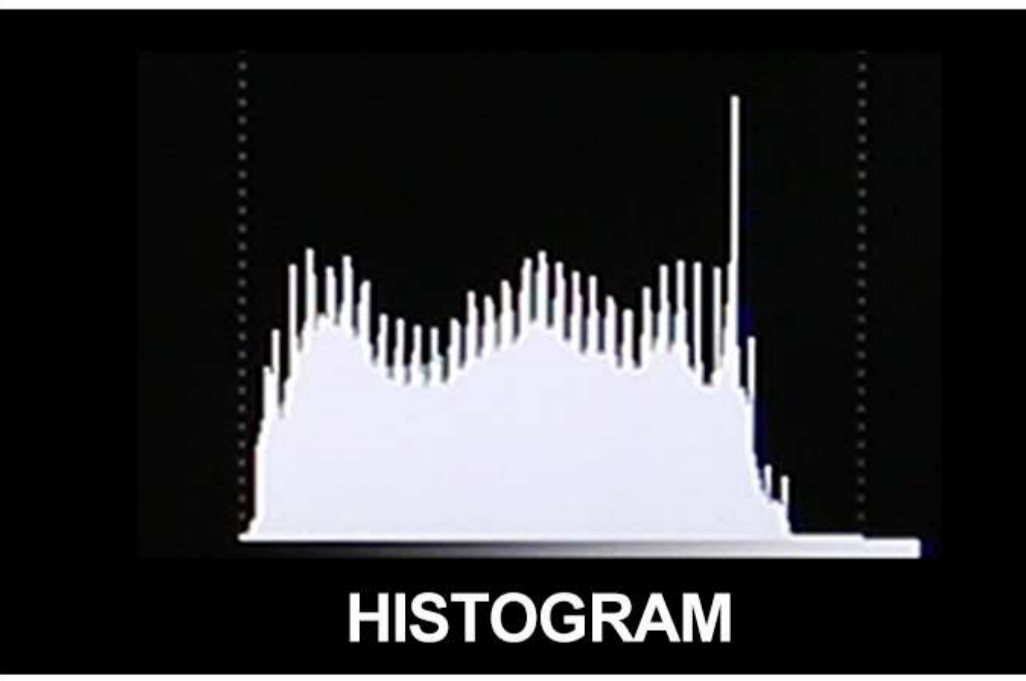
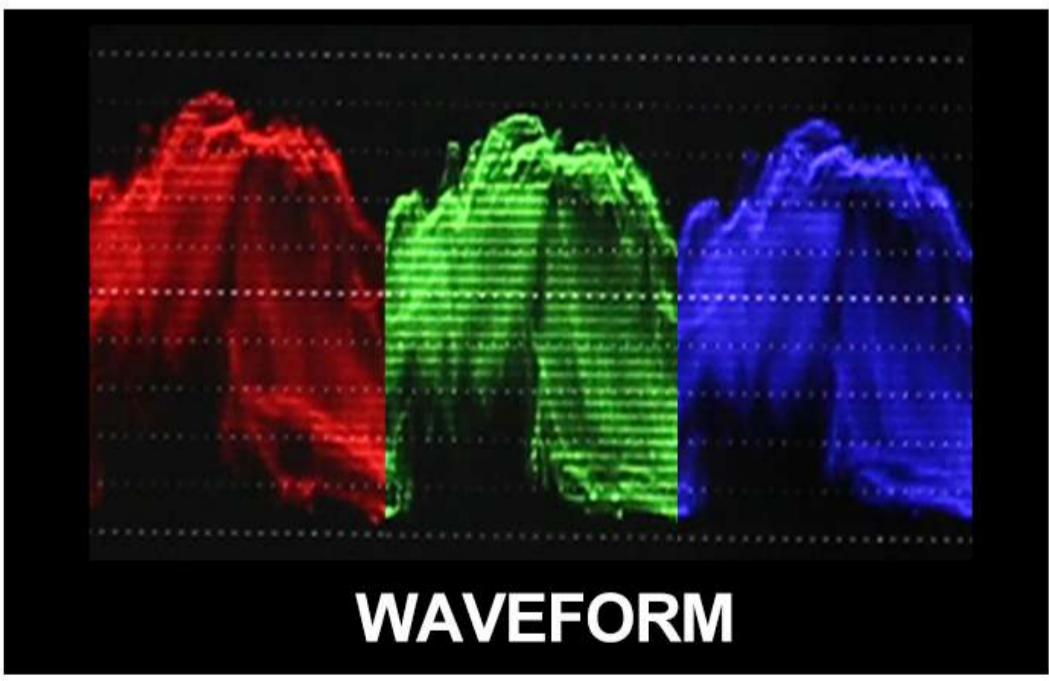
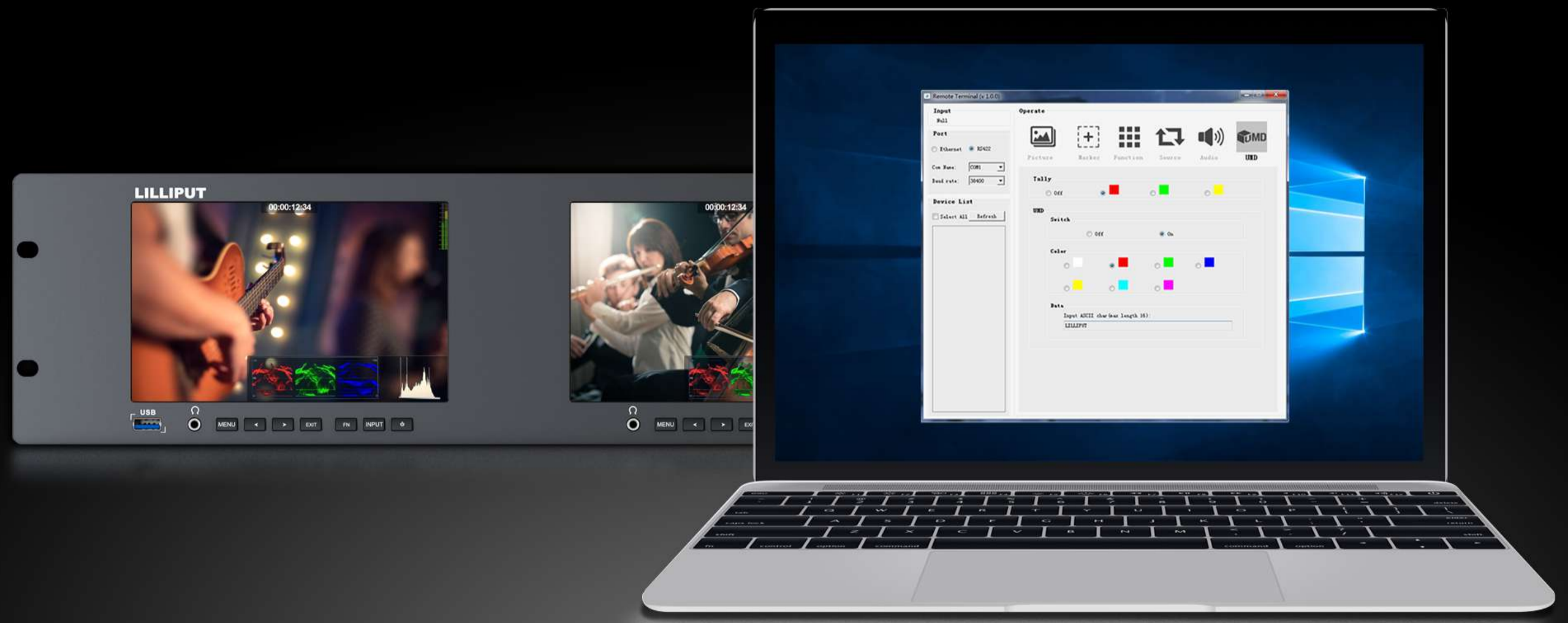
	G	R	Y
1	1	2	3
2	11	12	13
GND	4, 14		

LAN CONNECTION

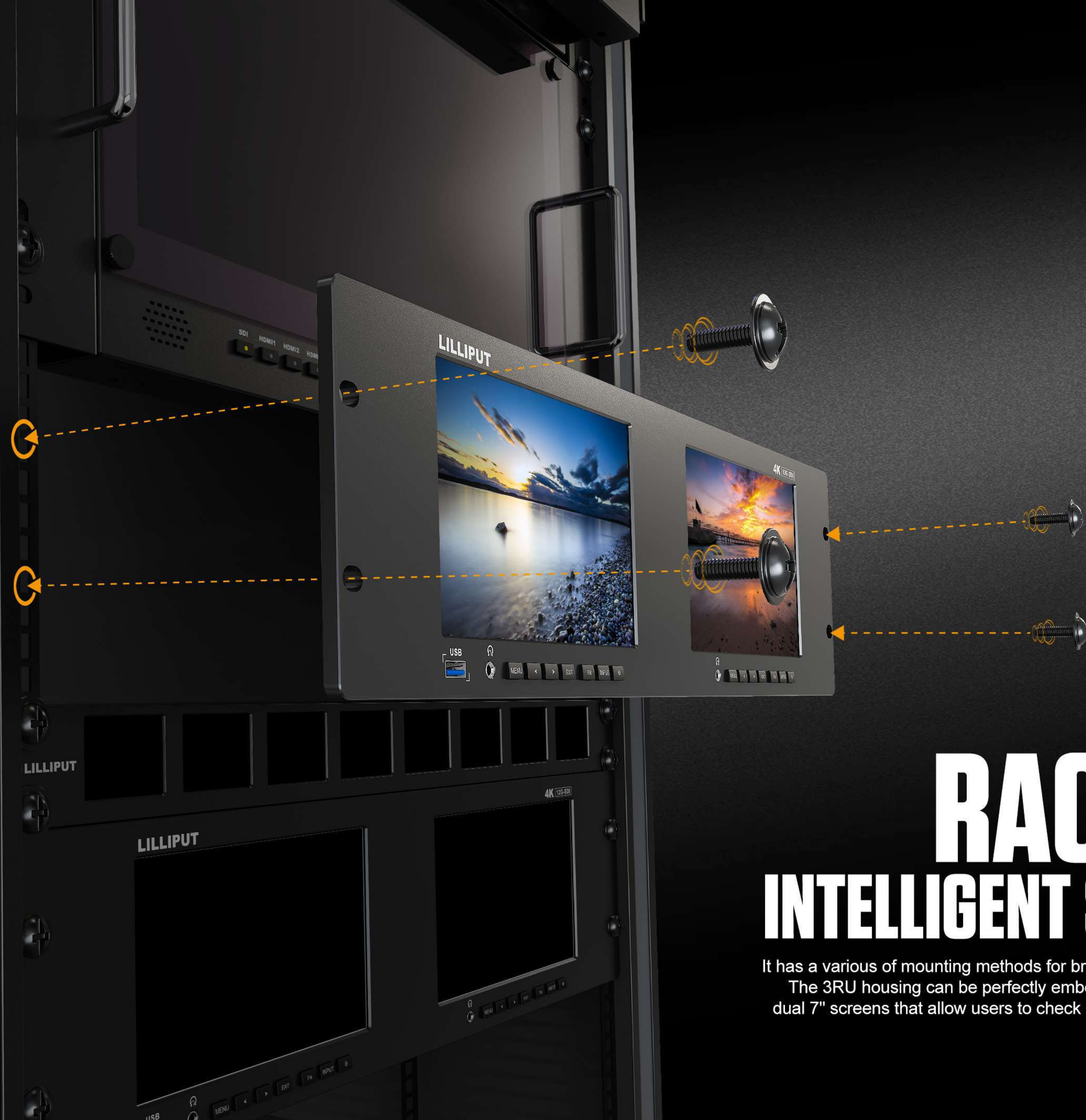
Select LAN port to connect to the PC, allowing the application to identify the monitor before control.

REMOTE CONTROL

Connect your computer to control the monitor via applications. Such as signal sources, functions, and audio...



- HDR
- Time Code (SDI Only)
- Remote
- Waveform
- Level meter
- Histogram
- Exposure
- Peaking
- False color
- Check field
- Color bar
- Pix to pix
- Marker
- Freeze
- H/V Delay



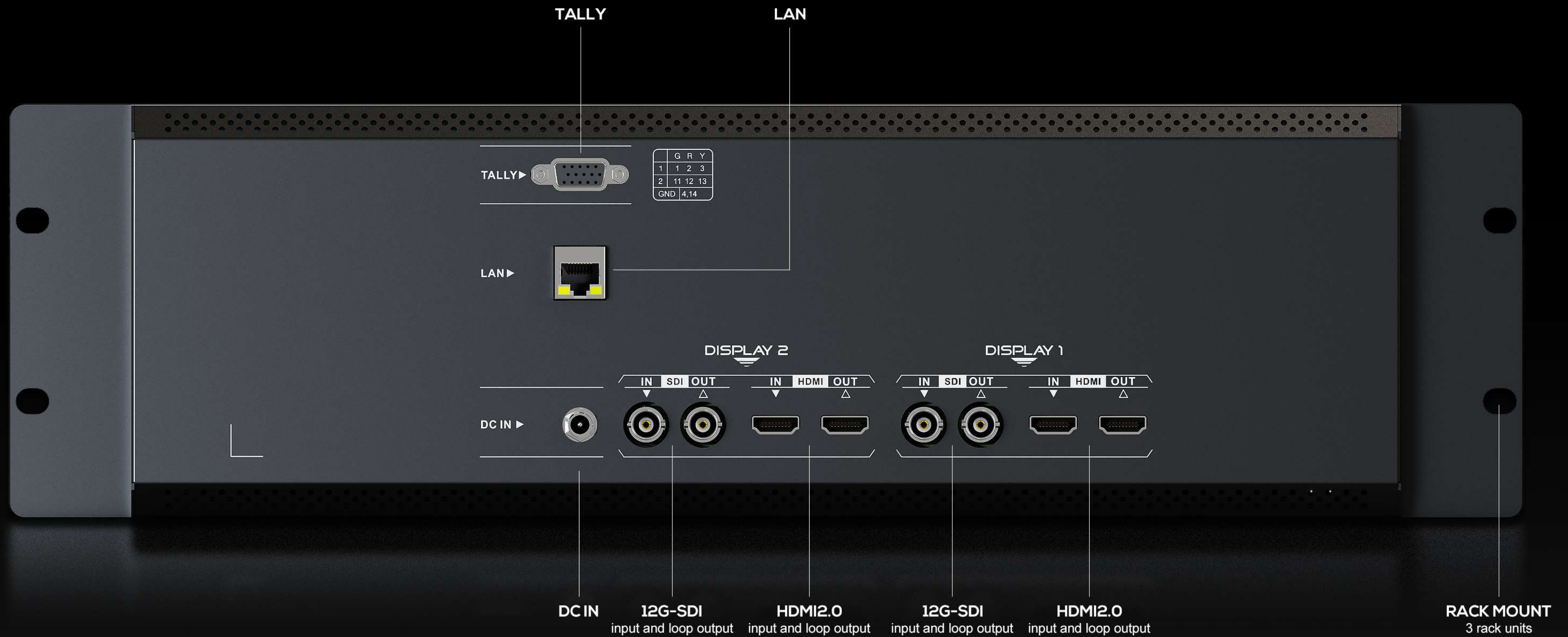
3RU

RACK MOUNT INTELLIGENT SDI MONITORING

It has a various of mounting methods for broadcast, on-site monitoring and live broadcast truck, etc. The 3RU housing can be perfectly embedded in a 19-inch cabinet. The monitor is equipped with dual 7" screens that allow users to check out two video signals at the same time, making it easy to create a multi-camera monitoring scenario.

RICH INTERFACES

Monitoring up to 2160p 60Hz HDMI and SDI videos. Just add signal cables to expand more diverse display solutions through loop output interfaces. Help creating a camera video wall.



SPECIFICATIONS

DISPLAY	Panel	2×7" LTPS
	Physical Resolution	1920×1200
	Aspect Ratio	16:10
	Brightness	1000 nits
	Contrast	1200:1
	Viewing Angle	160°/ 160°(H/V)
	HDR Supported	HLG; ST2084 300/1000/10000
INPUT	HDMI	2 (HDMI 2.0)
	12G-SDI	2
OUTPUT	HDMI	2 (HDMI 2.0)
	12G-SDI	2
SUPPORTED FORMATS	HDMI	2160p 24/25/30/50/60, 1080p 24/25/30/50/60, 1080i 50/60, 720p 50/60...
	12G-SDI	2160p 24/25/30/50/60, 1080p 24/25/30/50/60, 1080i 50/60, 720p 50/60...
AUDIO IN/OUT	Speaker	-
	Audio Channel	HDMI 8ch / SDI 16ch
	Ear Jack	3.5mm - 2ch 48kHz 24-bit
POWER	Input Voltage	DC 12-24V
	Power Consumption	≤21W (12V)
ENVIRONMENT	Operating Temperature	0°C~50°C
	Storage Temperature	-20°C~60°C
DIMENSION	Dimension(LWD)	480mm × 131.6mm × 32.5mm
	Weight	1.83kg



ACCESSORIES

STANDARD



12V 3A DC Power Adapter



Tally Connector



E-User Manual

